

# CUSTOM MADE VACCINES

• FOR WATERFOWL •

---

**Ani***on*

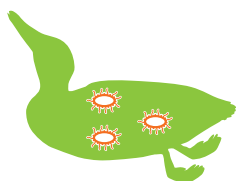
## CMV – CUSTOM MADE VACCINES

improving health, reducing antibiotic treatments

Vaccination is an excellent tool for the prevention of infectious diseases of livestock. Custom-made vaccines enable animals to form an effective immune protection, where other preventive strategies like licensed vaccines are absent for a specific pathogen, pathogen strain or serotype. Custom-made vaccines will help reducing antibiotic treatments.

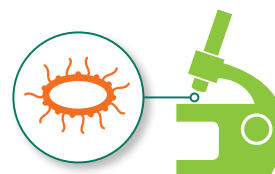
Custom-made vaccines stimulate animals to form an effective immune protection. Flock conditions may change constantly because a number of pathogens are able to mutate and change their properties, thereby quickly escaping the prophylactic scope of existing vaccines, and new strains or serotypes enter a flock. Custom made vaccine concepts offer the possibility to quickly react to these changes by using most actual isolates from the target farm starting with the next batch.

### PRODUCTION PROCESS



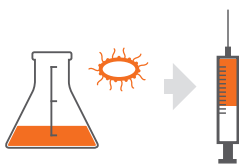
• **Step 1**

Viral and bacterial pathogens weaken the animal



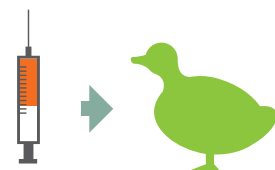
• **Step 2**

Sampling and identification of the pathogen



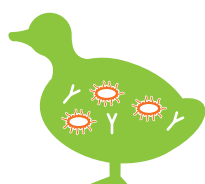
• **Step 3**

Production of a flock-specific vaccine



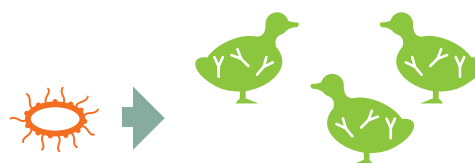
• **Step 4**

Application of flock-specific vaccine



• **Step 5**

After application the animal forms antibodies against the pathogen



• **Step 6**

Vaccine reduces morbidity and mortality from field infection



### **Polyvalent products:**

Combinations are possible

### **Adjuvants:**

Aluminiumhydroxide

### **Volumes per Dose:**

0.2 ml

0.3 ml

0.5 ml

1.0 ml

### **Bottle size:**

300 ml

500 ml

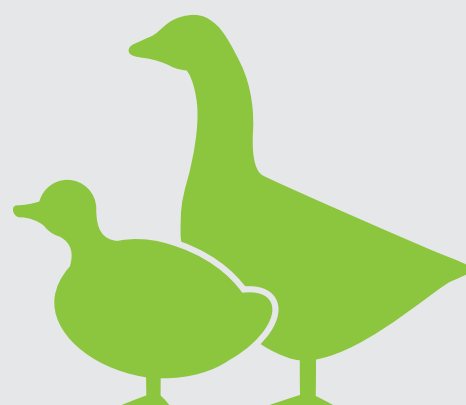
We offer innovative vaccines for waterfowl comprising the following antigens:

### **Bacterial Antigens incl. Mycoplasma**

- Clostridium
- Coenonia anatina
- Enterococcus
- Erysipelothrix
- Escherichia coli
- Mycoplasma
- Pasteurella
- Riemerella
- Salmonella
- Staphylococcus
- Streptococcus

### **Viral Antigens**

- DHV-1



For further information please contact our poultry veterinarians:

**Dr. Swaantje Rönchen**


Phone: **+49 44 73 - 94 38 52**

E-Mail: **roenchen@anicon.eu**

**Dr. Diana Petzoldt**

Phone: **+49 44 73 - 94 38 786**

E-Mail: **petzoldt@anicon.eu**

 We at **AniCon** regard ourselves as a competent and reliable partner in the field of animal health and food safety.

#### **Diagnostic Services (Accreditation ISO 17025)**

- Pathology
- Cultural bacteriology
- Cultural virology
- Serology
- PCR and sequencing

#### **Diagnostic Kits**

- Kylt® Real-Time (RT-) PCR-Kits

#### **Custom-Made-Vaccines for Livestock**

- Poultry
- Swine
- Cattle
- Sheep/Goats
- Fish

#### **Food Safety (Accreditation ISO 17025)**

Examination of food/-of animal feed/drinking water/-for animals

- Microbiological /chemical analysis
- Molecular /Immunological analysis
- Histology
- Quality Management & Consulting

 **AniCon** es un colaborador competente y fiable en los sectores de salud animal y seguridad alimentaria.

#### **Servicios de diagnóstico (Acreditación ISO 17025)**

- Patología
- Cultivos bacteriológicos
- Cultivos virales
- Serología
- PCR y secuenciación

#### **Diagnósticos in vitro**

- Kylt® Real-Time (RT-) PCR-Kits


#### **Vacunas específicas para animales destinados al consumo**

- Aves
- Cerdos
- Vacas
- Oveja/Cabra
- Peces

#### **Seguridad alimentaria (Acreditación ISO 17025)**

Pruebas de productos alimenticios/piensos, agua potable

- Pruebas microbiológicas / químicas
- Pruebas de biología molecular /inmunológicas
- Histología
- Gestión y asesoramiento de calidad

 **AniCon** ist Ihr kompetenter und verlässlicher Partner in den Bereichen Tiergesundheit und Lebensmittelsicherheit.

#### **Diagnostische Dienstleistungen (Akkreditierung ISO 17025)**

- Pathologie
- Kulturelle Bakteriologie
- Kulturelle Virologie
- Serologie
- PCR und Sequenzierung

#### **In Vitro Diagnostika**

- Kylt® Real-Time (RT-) PCR-Kits

#### **Bestandsspezifische Impfstoffe für Nutztiere**

- Geflügel
- Schwein
- Rind
- Schaf/Ziege
- Fisch

#### **Lebensmittelsicherheit (Akkreditierung ISO 17025)**

Prüfung von Lebens-/Futtermitteln, Trink-/Tränkewasser

- Mikrobiologische / Chemische Prüfungen
- Molekularbiologische / Immunologische Prüfungen
- Histologie
- Qualitätsmanagement & Beratung
- Gegengutachten

 **AniCon** est votre partenaire compétent et fiable dans les domaines de la santé animale et de la sécurité des produits alimentaires.

#### **Services de diagnostic (Accréditation ISO 17025)**

- Pathologie
- Bactériologie de culture
- Virologie de culture
- Sérologie
- PCR et Séquençage

#### **Diagnostics in vitro**

- Kylt® Real-Time (RT-) PCR-Kits

#### **Vaccins spécifiques à chaque élevage pour les animaux d'exploitation**

- Volaille
- Cochon
- Bovin
- Mouton/Chèvre
- Poisson

#### **Sécurité des Produits Alimentaires (Accréditation ISO 17025)**

Test des produits alimentaires, de l'eau pour consommation humaine / animale

- Tests microbiologiques / chimiques
- Tests de biologie moléculaire / immunologiques
- Histologie
- Gestion de la qualité et service de conseil



# AniCon

#### **AniCon Labor GmbH**

Muehlenstr 13 | 49685 Hoeltinghausen | Germany

Phone +49 44 73 94 38-30 | [info@anicon.eu](mailto:info@anicon.eu) | [www.anicon.eu](http://www.anicon.eu)